

Enjoy the flavour of Namibia

Uniquely Namibian products are produced by local crafters as an expression of their diverse cultures. Crafting Manufacturing Namibia is the link between the crafter and the market for his/her products. We want to introduce the world to Namibia through its unique products and to uplift the rural communities in which they originate. Despite the value of crafts created in Namibia, we are behind in the international community when it comes to effective production. It is Crafting Manufacturing Namibia's vision to use the knowledge and experience gained in international markets to develop the local production capacity in Namibia. It is our dream to one day be a world class manufacturer and to increase the retail of Namibian products.

Crafting Manufacturing Namibia's aim is to further penetrate international markets by doing research in countries all over the world for unique products and services to deliver. We aim to establish Crafting Manufacturing Namibia in overseas markets on a permanent basis.

Crafting Manufacturing Namibia's brand vision is to be committed to the upliftment of the disadvantaged rural poor in Namibia by empowering the Namibian Crafters that we trade with. We also put emphasis on empowering our staff through training.



Linking Namibian Crafters *to the world*



Our Product
RANGE





Design 1: Wooden Elephant Key Ring

Code: EK

The ever popular Elephant, synonymous to Africa, carved by rural Crafters out of “dolf” wood. These enormous creatures walking gracefully on Namibian soil represent Africa in all its glory.

HAND CRAFTED KEY RINGS



Design 2: Makalani Nut Key Ring

Code: MK

Makalani is the name given to a certain palm tree, growing in northern Namibia. The seeds look like small coconuts, and the local people, the Owambos and Himbas, peel the outer ginger looking skin and carve the

inner hard core to certain objects of art. The Makalani fruit can be eaten and can also be used to brew Ombike/Owalende: the Oshiwambo brew that looks and taste similar to Whiskey.



Wooden Giraffes (0.5m; 1m; 1.4m; 2m)

Codes: G50; G100, G140, G200

The ever popular Elephant, synonym to Africa, carved by rural Crafters out of Dolf wood. These enormous creatures walking gracefully on Namibian soil represent Africa in all its glory. Using ancient techniques and primitive utensils, the rural people of Namibia sit under trees to carve the beautiful giraffes out of Dolf wood. The Ptercarpus Angolensis tree is indigenous to north eastern Namibia and grows in the dense groves by

rivers and lakes. The Directorate of Forestry in Namibia strictly controls the Harvesting and use of Dolf wood in Namibia. The cutting of trees is carefully controlled, so each one is numbered and must have a permit before being cut. This unique giraffe is carved from a single piece of wood by Kavango tribe members in Namibia. Mostly it is the men of the tribe who do the carving, with women helping with the sanding and polishing.

WOODEN GIRAFFES





For centuries, the San people of Southern Africa have prized ostrich eggs as decoration. These jewellery and home decoration pieces are hand crafted out of shells recovered from hatching on free range ostrich farms.

OSTRICH EGGSHELL RANGE





Design 1: Elephant
Code: OEE



Design 2: Giraffe
Code: OEG



Design 3: Zebra Skin
Code: O EZ



Design 4: Guinea Fowl
Code: OEF

OSTRICH EGGSHELL RANGE EARRINGS



Design 5: Bushman
Code: OEB

Design 6: Ostrich
Code: OEO

Design 7: Animal Skin
Code: OEA



Design 1: Bushman
Code: OBB



Design 2: Giraffe
Code: OBG



Design 3: Elephant
Code: OBE



Design 4: Animal Skin
Code: OBA

OSTRICH EGGSHELL RANGE BROACHES



Design 5: Guinea Fowl
Code: OBF



Design 6: Ostrich
Code: OBO



Design 7: Zebra Skin
Code: OBZ



Linking Namibian Crafters *to the world*



Design 1: Ostrich
Code: OHO

Design 25: Animal Skin
Code: OHA

Design 3: Giraffe
Code: OHG

Design 4: Elephant
Code: OHE

OSTRICH EGGSHELL RANGE
HAIRCLIPS



Design 5: Bushman
Code: OHA

Design 6: Guinea Fowl
Code: OHF

Design 7: Zebra Skin
Code: OHZ



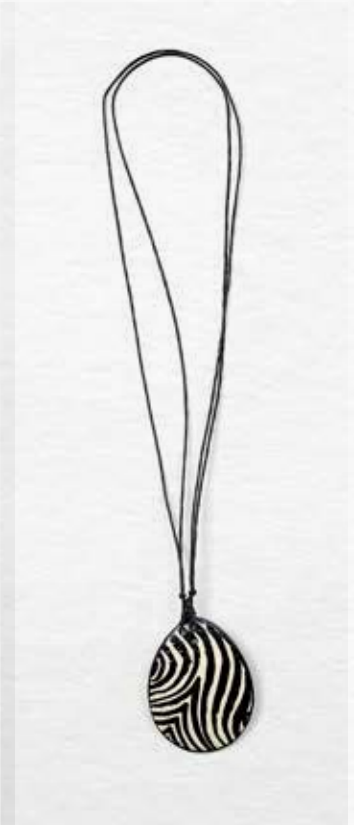
Design 1: Giraffe
Code: ONG1S



Design 2: Animal Skin
Code: ONA1S



Design 3: Elephant
Code: ONE1S



Design 4: Zebra Skin
Code: ONZ1S

OSTRICH EGGSHELL RANGE

**STRING
NECKLACES**



Design 5: Guinea Fowl
Code: ONF1S

Design 6: Ostrich
Code: ONO1S

Design 7: Bushman
Code: ONB1S



Design 1: Ostrich
Code: ONO1B



Design 2: Animal Skin
Code: ONZ1B



Design 3: Giraffe
Code: ONG1B



Design 4: Zebra Skin
Code: ONA1B

**OSTRICH EGGSHELL RANGE
BEADED 1 MEDALION
NECKLACES**



Design 5: Bushman
Code: ONB1B



Design 6: Elephant
Code: ONE1B



Design 7: Guinea Fowl
Code: ONF1B



Design 1: Zebra Skin
Code: ONZ3



Design 2: Ostrich
Code: ONO3



Design 3: Bushmen
Code: ONB3



Design 4: Animal Skin
Code: ONA3

OSTRICH EGGSHELL RANGE
BEADED 3 MEDALION
NECKLACES



Design 5: Elephant
Code: ONE3



Design 6: Giraffe
Code: ONG3



Design 7: Guinea Fowl
Code: ONF3



Design 1: Ostrich
Code: ONO 5



Design 2: Bushman
Code: ONB 5



Design 3: Elephant
Code: ONE 5



Design 4: Zebra Skin
Code: ONZ 5

OSTRICH EGGSHELL RANGE
BEADED 5 MEDALION
NECKLACES



Design 5: Giraffe
Code: ONG 5

Design 6: Animal Skin
Code: ONA 5

Design 7: Guinea Fowl
Code: ONF 5



Linking Namibian Crafters *to the world*



Design 1: Bushman
Code: OFB



**Design 2: Front
Dancing Bushman**
Code: OFDP



Design 3: Giraffe
Code: OFG

OSTRICH EGGSHELL RANGE
FULL EGGS



Design 4: Ostrich
Code: OFO



Design 5:
Elephant
Code: OFE



Design 6:
Zebra Skin
Code: OFZ



Design 7:
Guinea Fowl
Code: OFF



Design 1:
Code: OLH



Design 2:
Code: OLW



Design 3:
Code: OLW

OSTRICH EGGSHELL RANGE LAMPS



Design 4:
Code: OLH



Design 5:
Code: OLH



Design 6:
Code: OLH



Design 1:
Code: OLH



Design 2:
Code: OLW

OSTRICH EGGSHELL RANGE LAMPS



Design 3:
Code: OLH



Design 4:
Code: OST



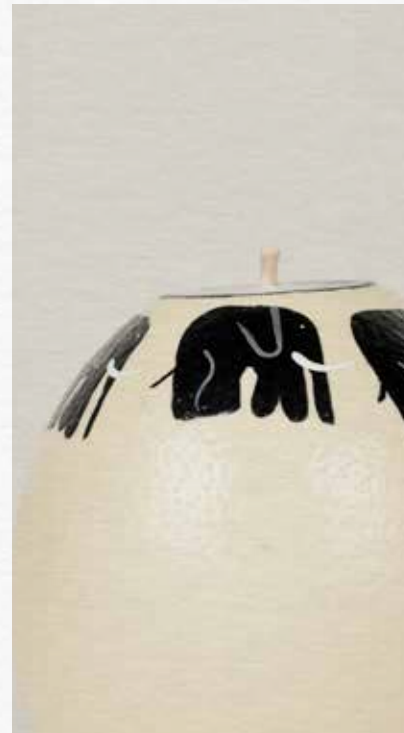
Linking Namibian Crafters *to the world*



Design 1: Bushman
Code: OCBF



Design 2: Bushman
Code: OCOF



**Design 3:
Elephant**
Code: OCEF



Design 4: Giraffe
Code: OCGF

OSTRICH EGGSHELL RANGE

FULL CANDLES



**Design 5: Back Dancing
Bushman
Code: OCDF**



**Design 6:
Guinea Fowl
Code: OCFB**



**Design 7:
Zebra Skin
Code: OCZF**



Design 1:
Code: OCH4



Design 2:
Code:

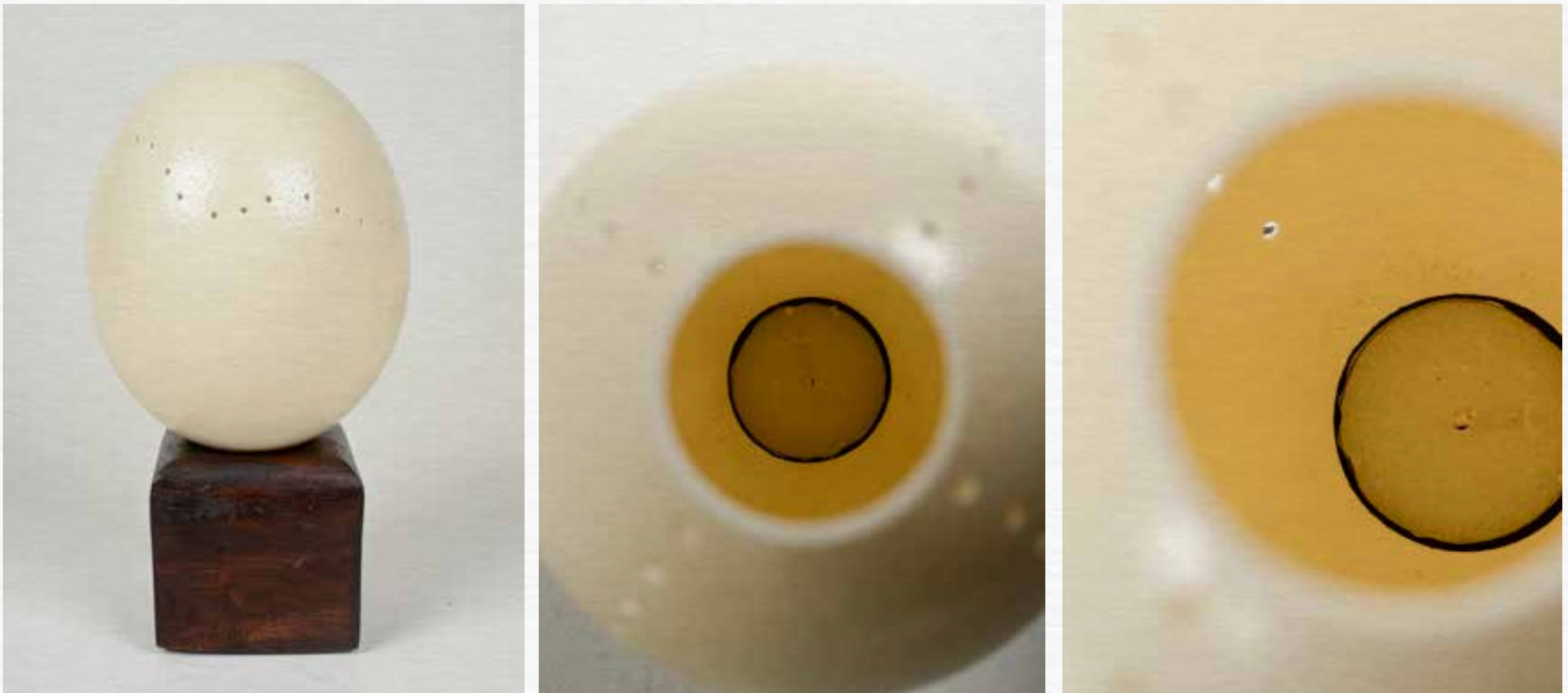


Design 3:
Code: OCHH



Design 4:
Code:

OSTRICH EGGSHELL RANGE
CANDLES
HOLDERS



Design 5:
Code: OCHH

INSIDE



Linking Namibian Crafters *to the world*



Design 6: Guinea Fowl
Code: OCFH



Design 1: Bushman
Code: OCBH



Design 3: Ostrich
Code: OCOH

OSTRICH EGGSHELL RANGE

HALF CANDLES



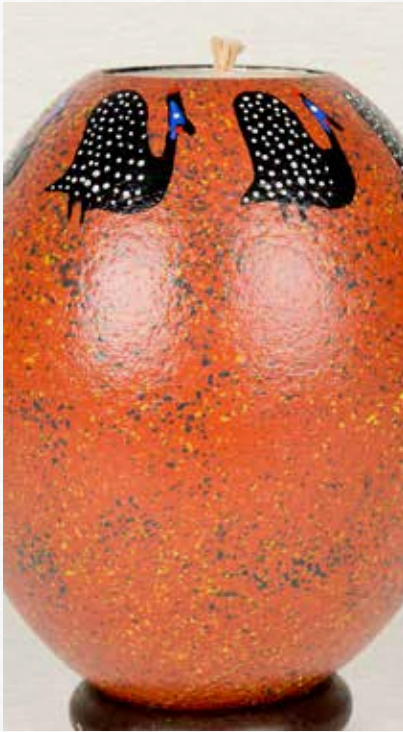
Design 2: Giraffe
Code: OCGH



Design 5: Zebra Skin
Code: OCZH



Design 4: Elephant
Code: OCEH



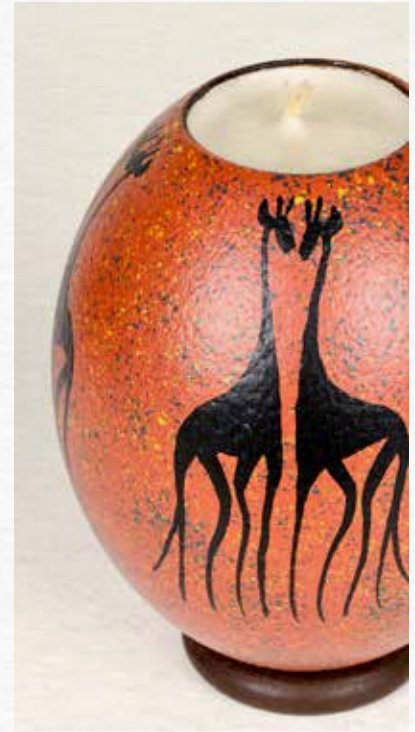
Design 8: Guinea Fowl
Code: OCFPF



Design 1: Bushman
Code: OCBPF



Design 5: Ostrich
Code: OCOPF



Design 4: Giraffe
Code: OCGPF

ORANGE OSTRICH EGGSHELL RANGE
FULL CANDLES



Design 7: Zebra Skin
Code: OCZPF



**Design 2 Back: Dancing
Bushman Code: OCDPF**



Design 6: Elephant
Code: OCEPF



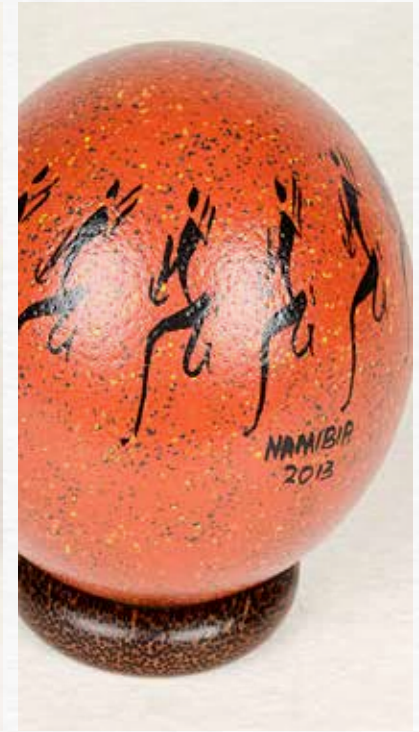
Design 1: Guinea Fowl
Code: OEBF



Design 2: Zebra Skin
Code: OEBZ



Design 3 Front:
Dancing Bushman
Code: OEBD



Design 4: Bushman
Code: OEBC

ORANGE OSTRICH EGGSHELL RANGE
PAINTED FULL EGGS



Design 5: Ostrich
Code: OEBO



Design 6: Elephant
Code: OEBE



Design 7: Giraffe
Code: OEBG

UNIQUE CRAFTING
HANDMADE



Corbeille





Linking Namibian Crafters
to the world



Design 1:
Code: MOE 3

Design 1:
Code: MOE 1

Design 3:
Code:

OSTRICH EGGSHELL RANGE

MOBILES



Design 4:
Code: MOE 2



Design 1:
Code: MT5



Design 2:
Code: MT3



Design 3:
Code: MN



Design 4:
Code: ME5

MOBILES



Design 5:
Code: ME1



Design 6:
Code: ME6



Design 7:
Code: ME10



Design 8:
Code: ME3

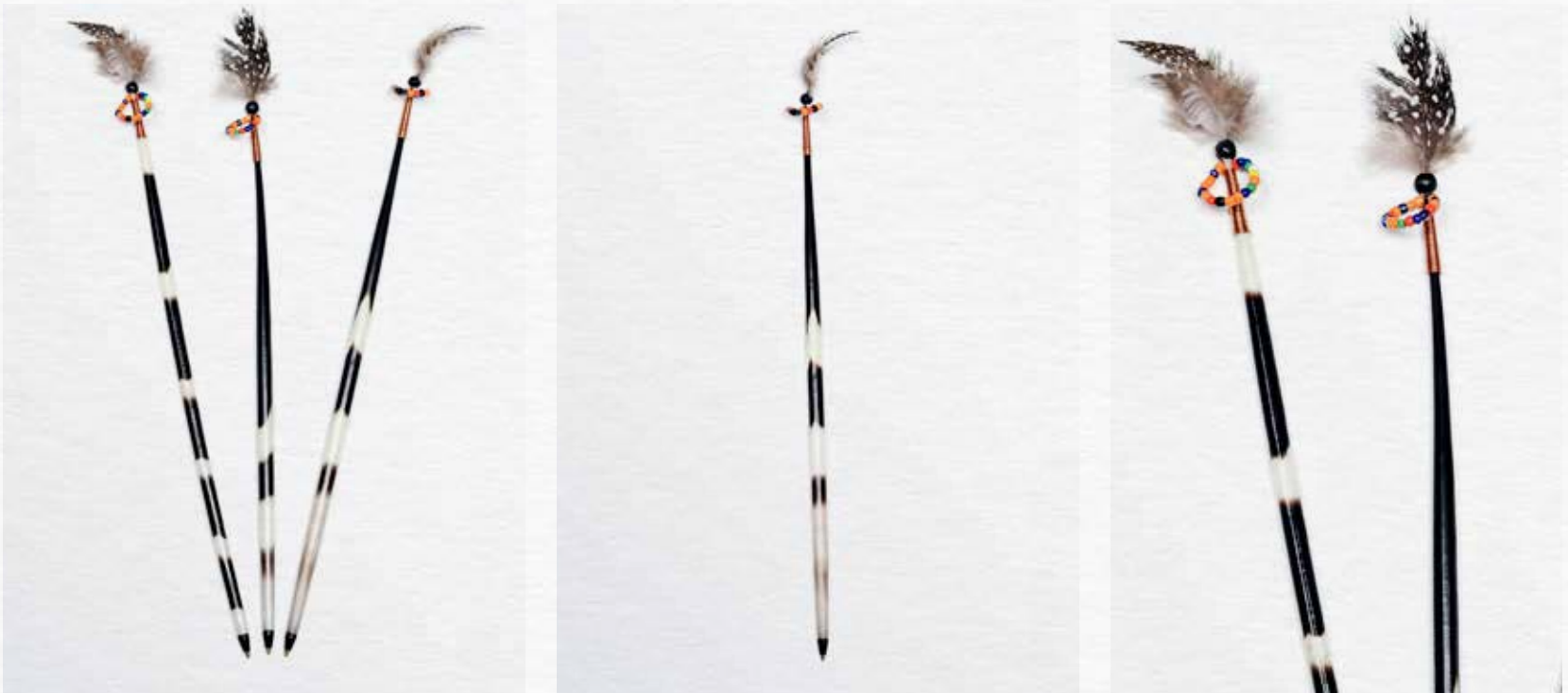


WOODEN TORTOISES



Codes: TOR

PORCUPINE QUILLS PENS



Code: PP



The ever popular Elephant, synonymous to Africa, carved by rural Crafters out of “dolf” wood. These enormous creatures walking gracefully on Namibian soil represent Africa in all its glory.

ELEPHANT PRODUCT RANGE



The Elephant Family

Females tend to spend their entire lives in the same herd and are extremely social. The males on the other hand tend to live a very isolated life except when they are searching for a mate. Elephants can be very emotional at times including the birth of new babies and at the death

of others. They also love to play. However, when food is scarce or there is danger the mood of the herd becomes very protective and serious. Elephants are intelligent animals. They are able to identify themselves in mirrors and have an idea of who they are as an individual as well as their place within the group.



ELEPHANT FAMILY



Carved out of dolf wood

- Small: Code - ES
- Medium: Code - EM
- Large: Code - EL
- X-Large: Code - EXL

ELEPHANT CANDLE HOLDER



Carved out of dolf wood

Small: Code - ECS
Medium: Code - ECM
Large: Code - ECL



Linking Namibian Crafters *to the world*

ELEPHANT EGG HOLDER



Code: EM

ELEPHANT MAGNETS



Code: EM



Design 1:
Code: M4



Design 2:
Code: M1



Design 3:
Code: M!

MOZAMBIQUE STATUES



Design 4:
Code: M1



Design 5:
Code: M3



Design 6:
Code: M3



Monkey ball is a round fruit from trees in Northern Namibia.

MONKEY BALL RANGE



They are gathered by women and children dried and cleaned out to leave a hard shell which is then painted and made into a candle with painted finishes.



Design 1:
Elephant
Code: MBCE



Design 2:
Giraffe
Code: MBCG



Design 3:
Zebra Skin
Code: MBCZ



Design 4:
Ostrich
Code: MBCO

MONKEY BALL RANGE



Design 5:
Bushman
Code: MBCB



Design 6:
Guinea Fowl
Code: MBCF



Design 7:
Front Dancing Bushman
Code: MBCD



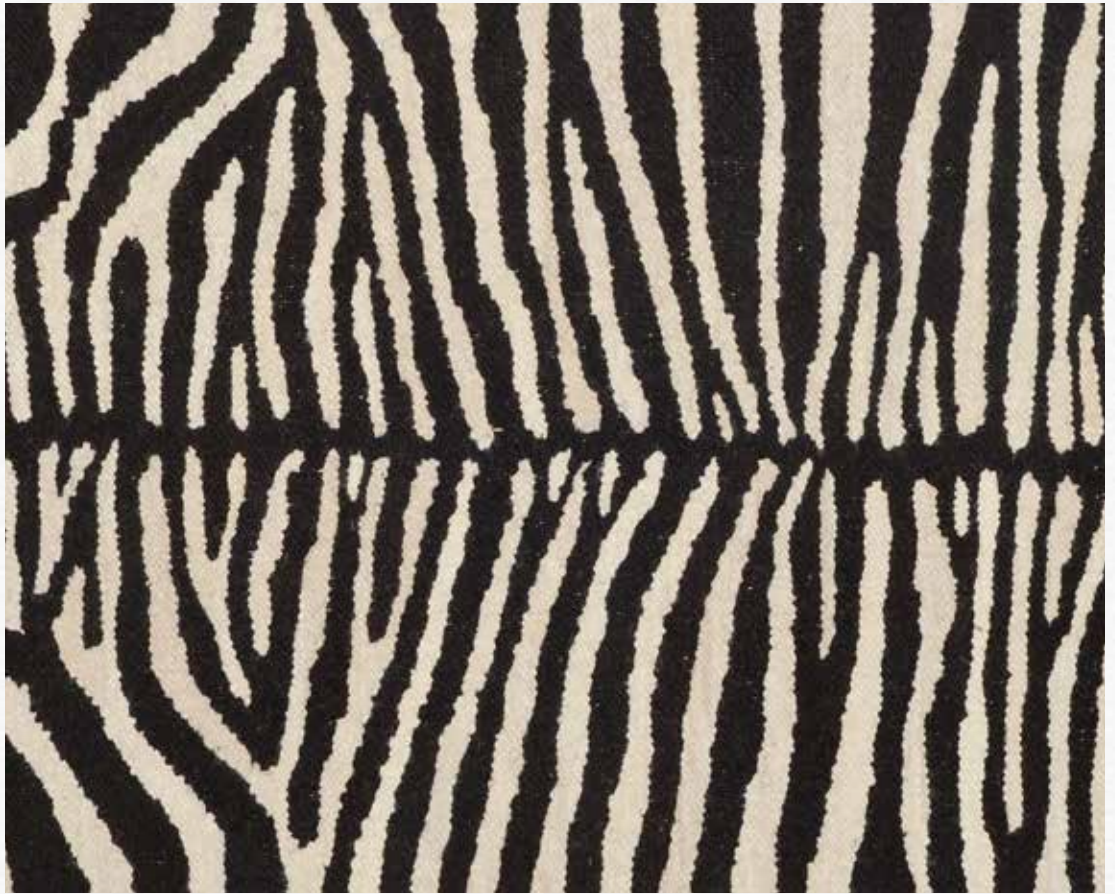
Design 1:
Dunes
Code: CAR1

One of the many gifts of the swakara sheep is wool. This wonderful fibre is woven into beautiful carpets using traditional weaving methods on an upright loom. Washing, dyeing, spinning and weaving provides much-needed employment in rural areas.

SWAKARA CARPETS



Design 2:
Code: CAR2



Design 3:
Zebra
Code: CAR3

SWAKARA CARPETS



Design 4:
Code: CAR4

Crafting Namibia can produce carpets woven to
your own specifications



Design 1:
Codes:
SMALL: CDS
LARGE: CDL



Design 2:
Codes:
SMALL: CES
LARGE: CEL



Design 3:
Codes:
SMALL: COS
LARGE: COL

CARD DESIGNS

Small: 7,5cm x 10,5cm

Large: 10cm x 15cm



Design 4:

Codes:

SMALL: CGS

LARGE: CGL



Design 5:

Codes:

SMALL: CFS

LARGE: CFL



Design 6:

Codes:

SMALL: CBS

LARGE: CBL



Linking Namibian Crafters *to the world*





Community trust

We will treat our staff as business partners therefore Crafting Manufacturing Namibia has opened a Community Trust, the Crafting Manufacturing Namibia Community Trust. This in turn is believed will grow staff and will ensure their full commitment and involvement. Details of the Trusts operations are as follows:

- Money will flow into the Trust in the form of profit sharing in accordance with the yearly performance of the company and any other forms of donations to Crafting Manufacturing Namibia.
- Shareholding in the trust will comprise 75% Crafting Manufacturing Namibia and 25% for production staff currently consisting of 5 permanent staff members.
- All production staff are previously disadvantaged.
- Benefits that will accrue to staff members will include the following but are not limited thereto:
 - Housing Scheme
 - Training and Development including SME entrepreneurial skills building
 - Various staff donations projects decided yearly between management and staff such as additional staff clothing, cash bonuses, covering household expenses such as municipality bills, paying school fees, elderly care etc.

